

# PG PROGRAM IN SUPPLY CHAIN MANAGEMENT

Course duration: 6 months



# WHO IS THIS PROGRAM FOR

## Budding Professionals

If you're at the start of your career in logistics and supply chain management and are keen to specialize in a specific role, this program might just be your perfect partner in growth!

## Experienced SCM Experts

Already sailing smoothly in the supply chain field but looking to steer your career towards new horizons within your organization? This program can be your co-pilot, helping you optimize your department and propel your career to new heights.

## Mid-Career Pathfinders

Standing midway in your logistics career, eager to expand and develop a versatile skill set that evolves with the industry? This program could be the key to unlock your potential and guide you to your next big career move. So,

is this program the perfect match for you? If you see yourself in any of these categories, it's time to say 'yes' to a transformative learning experience with our Supply Chain Management program!





# Rajalakshmi eduverse

**Shaping Tomorrow's Leaders :** Welcome to Rajalakshmi Eduverse, a pioneering educational initiative of the Sabari Foundation, has a rich legacy that dates back to 1997. Since then, we have risen as a dominant force in Tamil Nadu's educational sector, proudly holding the title of the largest private engineering college group in the state.

**Our mission is clear:** To prepare learners for real-world challenges by integrating traditional and digital teaching methods for unmatched learning experience. We place a strong emphasis on industry readiness, continuously updating our curriculum to align with the latest global corporate standards.

With our learner-centric approach, we are dedicated to creating an enriching environment where every student has the opportunity to excel. join us on this journey of empowerment with us and position yourself as a new-age digital citizen, primed to make a significant impact in the industry.



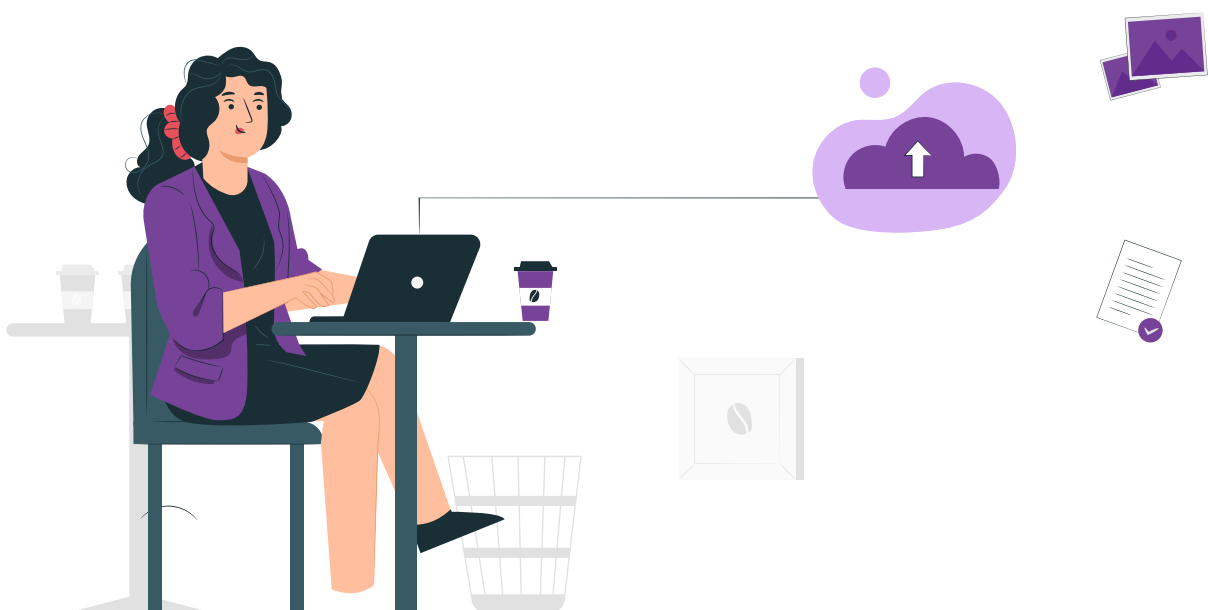


**RAJALAKSHMI**  
SCHOOL OF BUSINESS  
**DISCOVER THE POSSIBILITIES**

Rajalakshmi School of Business (RSB) stands out as one of the premier B-Schools in Chennai, having establishing itself as a top - tier institution across India. This distinction is attributed to its high-quality PGDM courses, impressive placement records, and state-of-the-art facilities. RSB's rigorous admission process, combined with its academic and research prowess, has further solidified its reputation as a leading B-School in Chennai.

A recent collaboration with Swinburne University, Australia—one of the world's renowned universities—has positioned RSB as the most preferred destination for management aspirants in Tamil Nadu offering students a world-class education at an affordable Indian price point. As a leading B-School in South India, RSB possesses all the essential elements to stand as a top B-School in Chennai in the near future.

For students across India, especially those from Tamil Nadu, seeking a top PGDM college in Chennai—a city celebrated for its rich culture—RSB is the ideal choice. Offering global management degrees alongside its flagship PGDM program, RSB is built to guide you in carving a successful path in the corporate world.





# DISCOVER THE WORLD OF SUPPLY CHAIN MANAGEMENT

Delve into the dynamic field of Supply Chain Management, a sphere encompassing every step from raw materials to the end consumer. In this realm, you'll navigate an intricate network of suppliers, driving the seamless flow of products.

## WHY CONSIDER A CAREER IN SUPPLY CHAIN MANAGEMENT?



### **Thrilling Opportunities:**

Engage in diverse roles, tackling real-world challenges.



**Rapid Growth:** As the industry expands, so do the job prospects.



**Career Advancement:** A Plethora Of Growth Opportunities Awaits With A Variety Of Options, Ranging From Logistics To Procurement And Exploring Multiple Avenues



**Competitive Pay:** Benefit from lucrative salary packages.

Step into this rewarding field and let your career take off!

# WHY CHOOSE EDUVERSE

Rajalakshmi  
eduverse 

Elevate your learning experience with Eduverse  
and here's why



## Extensive Network

Our relationships with over 700+ companies allow for broad opportunities.



## Top-tier Compensation

Our graduates reach remarkable heights with the highest CTC standing at 12 LPA.



## Abundance of Opportunities

With over 11,000+ job offers made, your chances are high.



## Invested in Research

Our commitment to innovation is evident with 8+ crores in sponsored research.



## Successful Placements

We've paved the way for over 10,000+ students to secure their dream jobs.



## Valuable Projects

Our students engage in consultancy projects worth over Rs. 3 Crore, gaining invaluable hands-on experience. Join Eduverse and step into a world brimming with opportunities!

# TOP SKILLS YOU'LL MASTER



## Understanding of SCM

Dive deep into the world of logistics and supply chain management.



## Supply Chain Drivers

Master the significant drivers that shape the supply chain.



## Emerging Technologies

Get future-ready with knowledge of disruptive technologies like AI, IoT, and more.



## Industry Trends & Practices

Stay ahead with insights into current trends and industry best practices



## Analytical Mastery

Develop your statistical programming and database querying skills.



## Data Visualization

Enhance your communication with impactful data visualization techniques.

# UNLEASH YOUR POTENTIAL IN SUPPLY CHAIN MANAGEMENT EDUVERSE'S DIVERSE TOPICS

- Foundation and Evolution of SCM.
- In-depth view of SCM Cycle and Process.
- Understanding of 3PL services and Logistics Strategic Triangle.
- Exploration of SCM Drivers: Inventory, transportation, facilities, information, sourcing, and pricing.
- Study of Emerging technology in SCM: Barcoding, GPS, RFID, Automation, AI, IoT
- Learning about current trends and best practices: elastic logistics, blockchain, robotic process automation.
- Deeper dive into global logistics and SCM operating models.
- Grasping the concept of intelligent routing and simulation.
- Exposure to Industry 4.0 and its impact on SCM.





# PROGRAM DETAILS

- 6-month online learning program with interactive virtual classes.
- 90 hours of comprehensive learning content across nine modules.
- Certification upon successful completion of the course.
- Cutting-edge curriculum designed by industry experts for real-world challenges.
- Expert-led workshops and a supportive learning community for guidance.
- Strong relationships with 700+ companies for placement opportunities.
- Dedicated career services team for resume polishing and interview skills.
- Placement assistance to help students secure job opportunities.
- Highest CTC offered stands at 12 lpa for successful candidates.
- Hands-on learning on machine learning, R-programming, data analysis and more.
- Engage in consultancy projects worth over Rs.3 crore gaining invaluable experience.

## ELIGIBILITY

UG degree

## TUITION FEE

₹100,000



# ENROLLMENT TO EMPLOYMENT YOUR ANALYTICS PATHWAY

## 01 ENROLL



Click on Apply now and we will get in touch!

## 02 COMPLETE



Finish online sessions and assessments.

## 03 OPPORTUNITIES



Tap into our vast industry network.

## 04 GUIDANCE



Get expert interview tips and advice.

## 05 PLACEMENTS



Secure your dream job with our placement assistance.

# MODULE 1

## Foundations of Supply Chain Management

We start our journey with the groundwork of Supply Chain Management, understanding its evolution, scope, and significance. This module guides you through the core components of SCM with relevant case studies.

- Foundation
- Evolution
- Cycle and Process View
- Scope and Significance
- Levels of Decision Making
- Integration
- 3PL Services
- ILS
- Logistics Strategic Triangle
- Logistics cost
- Case study
- Inbound/Outbound



# MODULE 2

## Drivers and Performance of Logistics and Supply Chain Management

This module dives deep into the driving forces of LSCM. You'll learn about various components like inventory, transportation, facilities, and more. We'll also touch on the obstacles for strategic fit and customer expectations.

- Drivers of LSCM
- Introduction - Drivers
- Inventory
- Transportation
- Facilities
- Information
- Sourcing
- Pricing
- SCM Performance
- Obstacles for Strategic Fit
- Case Study
- Customer Expectation

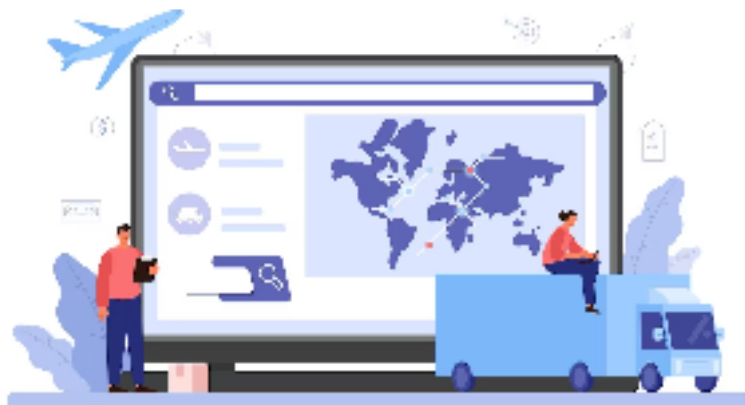


# MODULE 3

## Emerging Technology in Supply Chain Management

Discover how technology is reshaping the landscape of SCM. This module explores the implementation and impacts of various technologies like AI, IoT, and more in logistics and supply chain processes.

- Emerging Technology
- Delivery of Choice
- LMS
- Barcoding/Scanning
- POC
- WMS
- GPS
- RFID
- Automation
- AI
- IoT
- Automated Goods Delivery
- Social Media Platforms
- Impact of Technology
- Autonomous Fleet

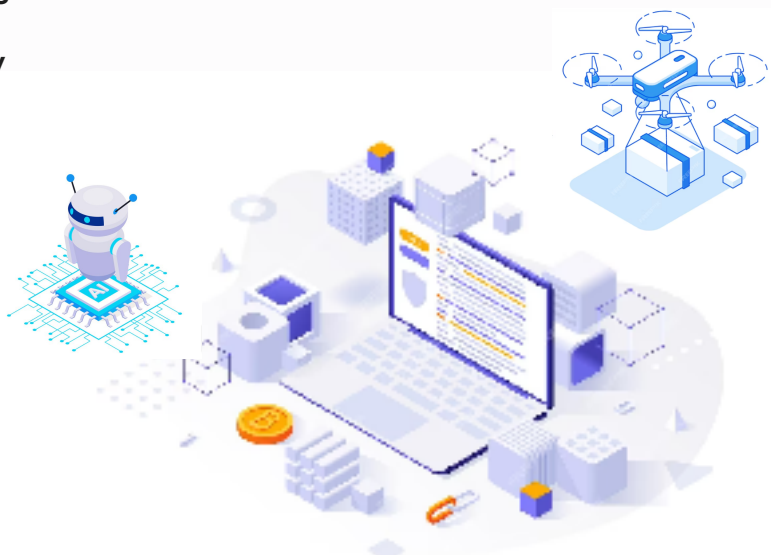


# MODULE 4

## Future Trends and Best Practices in Supply Chain Management

The final module provides insights into the future trends and best practices in SCM, including last-mile delivery, big data, and more. It also covers how various technological advancements are further transforming the industry.

- Trends and Best Practices
- Last Mile Delivery
- Big Data
- Elastic Logistics
- Blockchain
- Robotic Process Automation
- Drones
- ASRS
- AGV
- Prescriptive Analytics
- On-Demand Delivery
- Vendor Compliance
- Logistics Strategy
- VMS/CRM
- Global Logistics
- SCM Operating Model
- LSP/Performance Metrics
- Intelligent Routing
- Simulation
- Industry 4.0
- Closure



Begin your Skill Development Journey Today!  
Gain Proficiency in Supply Chain management from  
Rajalakshmi Eduverse & Become Recruiters Top Pick!



No. 25, Second Floor, Chitrakulam N St, Alamelu Manga Puram,  
Girija Garden, Mylapore, Chennai, Tamil Nadu 600004

Contact: 91768 27682, 044 3500 2988

Email : [admissions@myeduverse.net](mailto:admissions@myeduverse.net)

[www.myeduverse.net](http://www.myeduverse.net)

